



REALTREE®

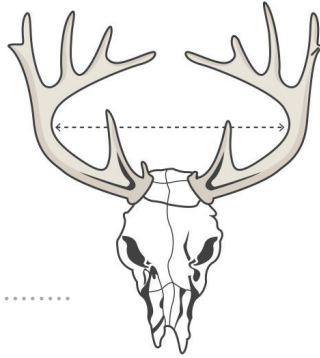
SCORE YOUR RACK

GO TO WWW.REALTREE.COM/SCORE-YOUR-RACK TO ENTER YOUR SCORE AND SHARE WITH YOUR FRIENDS

All measurements must be made with a 1/4-inch wide flexible steel tape to the nearest one-eighth of an inch. (Note: A flexible steel cable can be used to measure points and main beams only.) Convert fractions to decimals. Enter decimals, rounded to the hundredth decimal place. For example, if a point measures 7.3864 inches, you would enter 7.39 in the space provided.

1. THE INSIDE SPREAD

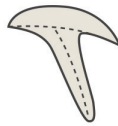
We want the inside spread. And it's found by measuring the distance across the inside of the beams at the widest point.



Inside Spread Total _____

2. LENGTH OF ABNORMAL POINTS

If you have a particularly big buck and are unsure of whether a point counts as normal or abnormal, seek out a registered scorer for assistance. Otherwise, just measure any points that aren't part of the classic, typical formation.

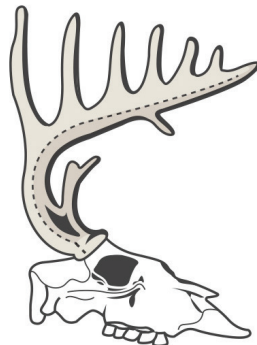


Left Antler:	Right Antler:
Abnormal Point: _____	Abnormal Point: _____
Abnormal Point: _____	Abnormal Point: _____
Abnormal Point: _____	Abnormal Point: _____
Abnormal Point: _____	Abnormal Point: _____
Abnormal Point: _____	Abnormal Point: _____

Length Total _____ Length Total _____

3. LENGTH OF MAIN BEAM

Grab your scoring string and start from the burr of the antler. Stretch the string along the outside curve of the beam, all the way to the tip. That's the length of one beam. Repeat on the other side.

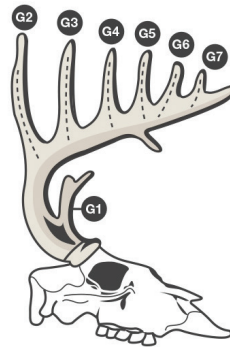


Right Antler Total _____

Left Antler Total _____

4. LENGTHS OF POINTS

Each antler point is measured from the point where it meets the main beam to the tip of the tine.



Left Antler:

G-1.Length - 1st Point: _____

G-2.Length - 2nd Point: _____

G-3.Length - 3rd Point: _____

G-4.Length - 4th Point: _____

G-5.Length - 5th Point: _____

Right Antler:

G-1.Length - 1st Point: _____

G-2.Length - 2nd Point: _____

G-3.Length - 3rd Point: _____

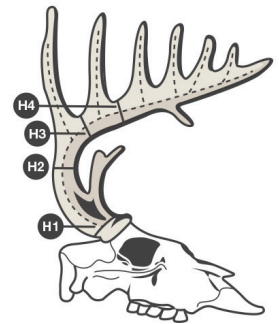
G-4.Length - 4th Point: _____

G-5.Length - 5th Point: _____

Length Total _____

5. MASS MEASUREMENTS

Wrap your string around each area of the main beam designated in the illustration. Mark the string and measure.



Left Antler:

H-1.Circumference - 1st Point: _____

H-2.Circumference - 2nd Point: _____

H-3.Circumference - 3rd Point: _____

H-4.Circumference - 4th Point: _____

Right Antler:

H-1.Circumference - 1st Point: _____

H-2.Circumference - 2nd Point: _____

H-3.Circumference - 3rd Point: _____

H-4.Circumference - 4th Point: _____

Length Total _____

Add all of your totals for a final score.

NAME: _____

TOTAL SCORE: _____